

# The bigger picture: how secure is your business?

So, you've installed some firewalls and you keep an eye on security in the data centre. Great. But how secure is the rest of your business?

In today's ever-evolving landscape, risks can come from every angle. A continual challenge, yes, but it's not all doom and gloom. Learn how you can proactively prevent and protect your whole network from the cyber threats of today and tomorrow.

## The lay of the landscape



Every **5 seconds**

a host accesses a malicious website



Average of **26**

pieces of malware in cloud apps across a given organisation



**96%**

year-on-year increase in smartphone infections in April 2016



Every **30 seconds**

a 'Zero Day' malware event occurs



Every **32 minutes**

sensitive data is sent outside of the organisation



**900%**

rise in unknown malware hits per hour in 2016

## Keeping your entire ecosystem secure

With fast increasing threat vectors, your defence can't afford to stop at the data centre.

Now mobile devices are second nature, cloud technology is commonplace and locations are constantly diversifying, the threat landscape is more expansive than ever.

### Devices

- EMM
- Device encryption
- Data encryption
- Anti malware
- Forensics
- Endpoint DLP

### Cloud Services

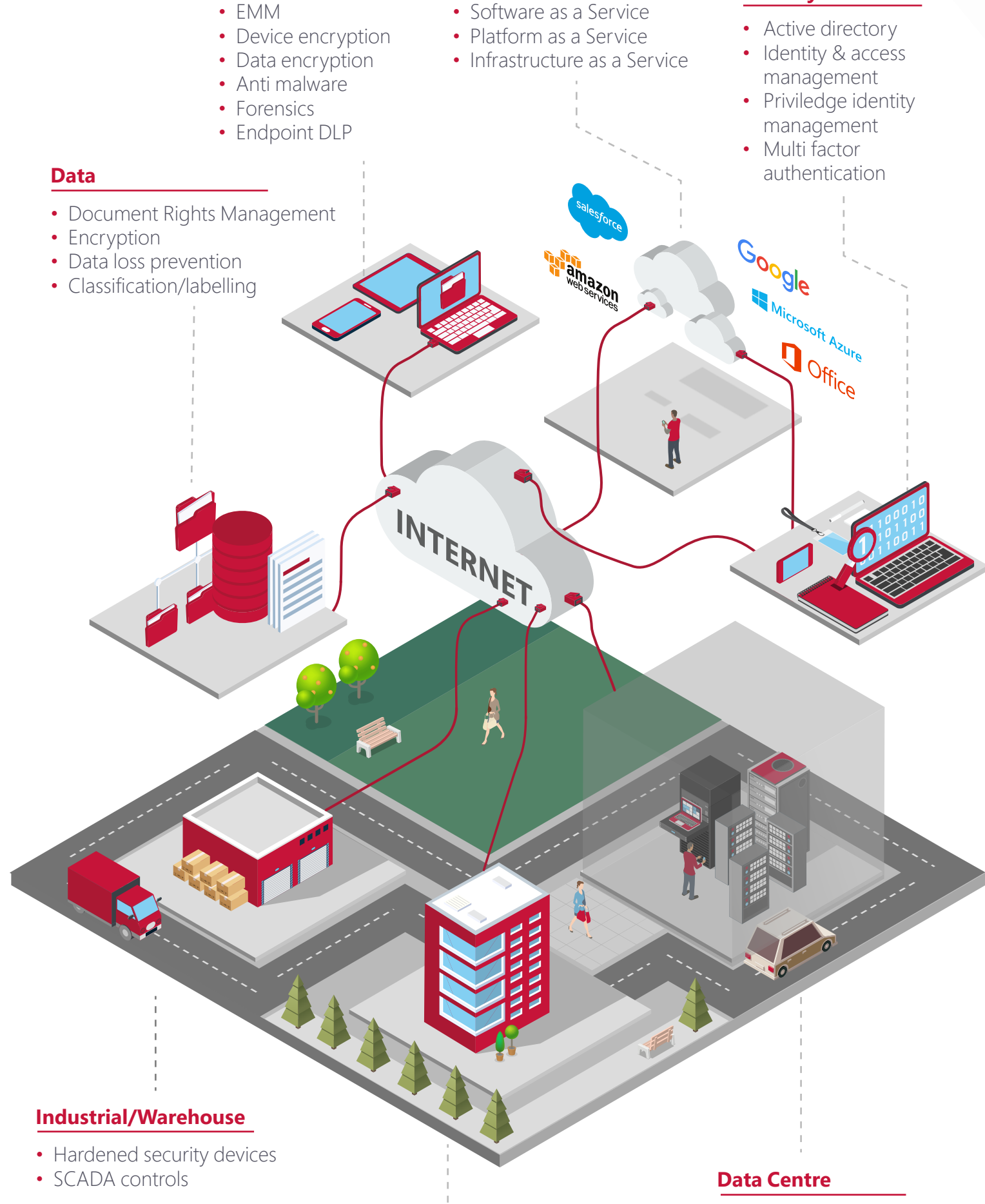
- Software as a Service
- Platform as a Service
- Infrastructure as a Service

### Identity

- Active directory
- Identity & access management
- Privileged identity management
- Multi factor authentication

### Data

- Document Rights Management
- Encryption
- Data loss prevention
- Classification/labelling



### Industrial/Warehouse

- Hardened security devices
- SCADA controls

### Branch office

- Wired and wireless SMB security gateway

### Data Centre

- DDOS
- WAF
- Micro segmentation
- Next generation threat prevention
- Firewall

## From vulnerability to super security

At Ultima, our combination of strategic advice and end-to-end deployment services make us the perfect partner to take your business security to the next level.

Focusing on four key areas, we'll work with you to give visibility of threats occurring on your network, spot areas of weakness and prioritise remediation to help you put in place an effective security policy.

**#1**



### Policy and best practice

With GDPR promising fines of up to €20 million or **4% of annual turnover for breaches from May 2018**, we'll help ensure that your security policies and frameworks are robust and effective enough to handle the vast amount of data being sent every day.

**#2**



### Threat management

Our risk management expertise will help you understand current security levels and **quickly spot major threats to your organisation**, in order to drastically reduce risk. Cyber criminals' tactics are increasingly sophisticated, so we use tools to protect you not only against known threats but unknown and 'Zero Day' malware events too.

**#3**



### Vulnerability analysis

When it comes to remediating weak points in your defence across the ecosystem, manual processes and traditional methods won't cut it. **Our comprehensive approach to vulnerability management streamlines the resolution process** by adapting to the growth and complexity of your systems, infrastructure and business applications.

**#4**



### Centralised visibility

Effective security stretches far beyond the IT department. **We can provide a clear, snapshot of your company's security position**, highlighting what's actually happening in your network to help you understand the threats your organisation is facing.

Discover more about how our tailored solutions can maximise your business security and prevent new-age threats from entering your landscape:

[www.ultima.com/strategy-planning/advisory-services-for-network-and-security](http://www.ultima.com/strategy-planning/advisory-services-for-network-and-security)